

**CLUSTER  
FOR  
LOGISTICS**

LUXEMBOURG

ADDING VALUE IS THE KEY.



ActivityReport  
**2019**



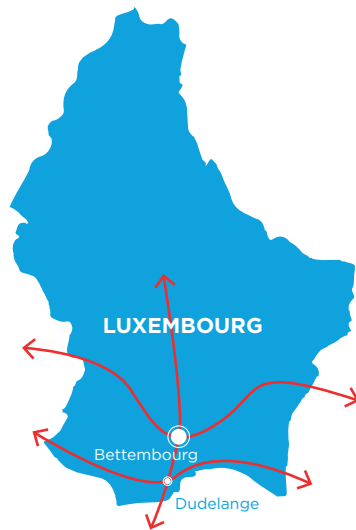
## Content:

1.	Welcome in Luxembourg.....	04
2.	Mission .....	08
	Key pillars .....	09
3.	Board .....	10
4.	Business Plan .....	11
	Objectives 2020 .....	12
5.	Outlook 2021-2022 .....	13
	10 years of the Cluster for Logistics Luxembourg .....	14
	Our main events in the last 10 years .....	16
	Facts & Figures 2019 .....	18
	Events 2019 .....	20
7.	Our projects and workgroups .....	28
8.	Annual Report Summary .....	31
9.	Become a member .....	32
10.	Premium and founding members for 2019 .....	33
	Company and Start-up members .....	34

# 1. Welcome in Luxembourg

---

Ideally located in the heart of Europe less than 300 kilometres from two world-leading maritime ports, the Grand Duchy of Luxembourg based infrastructure and service providers offer privileged access and service to a market of 450 million over-average wealthy consumers **for added value logistics activities for industry, retail and commerce.**



## FOR ADDED VALUE LOGISTICS ACTIVITIES

In a context of higher economic volatility, and pending Brexit, the **10 years** of the Cluster for Logistics were celebrated in June 2019. Achievement of the vision to position Luxembourg in the top 10 locations in Europe to strengthen the diversification of the economy has reached reality with increased supply chain activities, strong freight villages and a new focus on advanced ICT environment for data driven innovation.

## DATA DRIVEN INNOVATION FOR SUPPLY CHAIN MANAGEMENT

Since 2006 the Luxembourg Government adopted several infrastructure projects to diversify its economy and built the logistics sector as a key pillar of the Luxembourg economy. The **Eurohub South** site was developed as a logistics platform of choice in Europe, building a multimodal transport to encourage operators to create services to new destinations. The modern site inaugurated in 2017 increasingly offers efficient access

to cargo railways and major highway connections throughout Europe. The modern terminal in operation since June 2017 handles up to 4 combined tracks and 2 rail motorway platforms, each 700 m long, significantly increasing the attractiveness of Luxembourg as a hub for combined transport and eco-logistics. The logistics zones Eurohub Center in Contern and Eurohub South in Bettembourg/Dudelange have been developed as dedicated logistics parks and with connections to Belgium, China, Italy, Poland, Spain, Turkey, North Germany and the North range of ports. While the Eurohub Center hosts logistics activities related to air freight, healthcare and high value products, the Eurohub South is dedicated to retail and heavy combined container rail and road logistics.

## THE ATTRACTIVENESS OF LUXEMBOURG AS A HUB FOR COMBINED TRANSPORT AND ECO-LOGISTICS INCREASES WITH EU GREEN DEAL

New connections to Poland, Germany and China increased the connection of

Luxembourg by combined transport to the ports of the North, Baltic and Mediterranean Sea, the Iberian Peninsula and Turkey. New links through the silk road (Belt and Road) to major Central European and Asian industrial centres were achieved.

Created in 2009, as a non-profit organization, the C4L is **The Network of Logistics** with over 100 companies including many professionals as partners. One of its founding members, the Luxembourg Maritime Cluster (CML) represents the Blue Economy community of the Grand Duchy around its maritime ship register. Since 2017 another founding member the University of Luxembourg offers a Master in Logistics and Supply Chain Management as well as executive education and a high-level annual eXplore conference in collaboration with the Massachusetts Institute of Technology Center for Transportation and Logistics (MIT CTL) and its global SCALE network.

The updated R&D law of 17 May 2017 relating to the promotion of research, development and innovation provides grants that are particularly adapted to the needs of small and medium-sized enterprises (SMEs). Supported by founding member Luxinnovation, the Luxembourg

national agency funds research and development instruments and applied innovative initiatives up to 80% for SME <sup>[1]</sup>. The launch of the House of Startups <sup>[2]</sup> (HoSt) in June 2018 and the Luxembourg City Incubator <sup>[3]</sup> encourages logistics startups to innovate and increase activities in digital innovation. The government is committed to a transport policy that adopted the 3rd industrial revolution as a vision and focuses on economic diversification with lower ecological impact. When you read this, Luxembourg will be the first country in the world, that has introduced free transportation in March 2020.

## **STRONG PRESSURE IS EXPECTED ACROSS EUROPE TO DECREASE CARBONDIOXIDE EMISSIONS TO FIGHT CLIMATE CHANGE**

Ongoing efforts to achieve a further reduction of CO2 emissions is the nation's ambitious climate change objective, reflected in the Lean and Green programme and energy savings initiatives (EEO) introduced in its national energy and climate plan (PNEC).

Thanks to investments in a state-of-the-art 3,000-sq m pharma and healthcare hub in 2013 and certification of the international airport according to the European Good Distribution Practice for healthcare (GDP) in 2014, the healthcare air freight at the airport - 6<sup>th</sup> airfreight platform in Europe - increased to more than 40'000 tons. The total volume slowed down from the exceptional results of 2018 to 893'090 tonnes (-6.7%) in 2019, while strengthening the Logistics Hub Contern close to the airport. Expanding warehouses at the Eurohub South, building modern facilities for containers and bulk at the inland Port of Mertert, Luxembourg has developed the required infrastructure to play a key role in multimodal freight transportation, as a hinterland port and distribution centre. Three main freight corridors intersecting in Luxembourg are expanding connections.

The Luxembourg strategy focused on multi-product specialisation on **value adding activities** in logistics requiring specific handling and/or storage solutions. Its favourable business climate supported Luxembourg to become a unique recognized location for high added value logistics and supply chain activities.



### Blue Banana

A European distribution Center located in Luxembourg can serve the heart of the Blue banana in 1 day (550 km).

Fast and cost-effective cargo movements are key, the cargo community driven by Lux-Airport and the Single Window for Logistics project team has developed a collaboration with Nallian, to implement a new Cargo Community System (CCS) for logistics and air cargo. Safety, security, efficiency and cost-effectiveness are

the priorities. The private Luxembourg Freeport offers storage facilities to store works of art, precious metals, wines, antiques, jewels, documents and other valuables under optimal conditions.

A broad range of companies have already established offices in Luxembourg and developed the Grand Duchy into a major European logistics hub. The apprenticeship offer has been increased to cover logistics technicians (DT) and warehousing

(DAP), allowing to build a multi-lingual workforce for the European market.

The Cluster for Logistics Luxembourg asbl (C4L) 10 years celebration coincided perfectly with the Government's logistics and supply chain action plan for the first decade. The Cluster federates institutional actors and private enterprises around different axes of competence counting almost 110 members. Focusing on logistics and industrial companies it brings together representatives from logistic companies, shippers, research and other organisations. They pursue the aim to strengthen Luxembourg as a major European logistics hub - for high added value services and e-commerce represented by founding member clc [4]. The Cluster for Logistics is member of the European Logistics Association (ELA) [5] with 30 other national associations across Central & Western Europe and represents the Luxembourg Chapter of the large German BVL with over 11'000 members globally.

The C4L's actions focus on the improvement of competitive tools and competence by providing advice and accurate information in a global framework. At the same time the cluster

backs up the actions of its members and customers/shippers to expand the level of current by new innovating services, niche markets, high quality standards and added value services.

Logistics operations made in Luxembourg offer a sustainable, competitive and international advantage in Europe <sup>[6]</sup>. In a context of greater economic volatility, the success of a logistics project or an operator depends on achieving qualitative, competitive and resilient global services, in the customers preferred language.



# 2. Mission

## THE C4L MISSION IS TO SERVE, REPRESENT AND PROMOTE THE LUXEMBOURG LOGISTICS COMMUNITY AND DRIVE ITS MEMBERS TO INNOVATE

The Cluster for Logistics associates logistics operators from all transport modes, forwarders, carriers, service providers, research institutes and other organizations to develop Luxembourg as an international logistics hub, with a strong community. The Cluster endeavours to bring together as many players as possible and bundle their logistics competencies. The ultimate goal is the optimization of the customer benefit, for both shippers as well as end-users within e-commerce. To achieve its goal, the Cluster has 4 central missions:

- ▶ The C4L **serves** all its members as a neutral coordination, information and communication platform.
- ▶ The C4L **represents** the interests of all its members through common positions in relation with the future development of Luxembourg as logistics hub.

- ▶ The C4L drives its members to **innovate** and develop logistics skills as factor of competitiveness.
- ▶ The C4L increases recognition of logistics in Luxembourg and **promotes** Luxembourg as a strong logistics hub abroad.

## REPRESENTED UNDER TOP 10 LOCATIONS FOR VALUABLE PRODUCTS IN EUROPE

- Many indices compare countries or regions to their peers, like the bi-annual World Bank Logistics Performance Index (LPI). **Luxembourg ranked 2<sup>nd</sup> in the 2016 edition. However, as the valuation methodology is known to lead to volatile results, the LPI is currently under revision by the World Bank.**

The FMGlobal Resilience Index, comparing 12 drivers of operational resilience for 130 countries, is a good indicator for investors worldwide. Luxembourg ranked 7<sup>th</sup> of 130 countries in 2019 and compared well to its direct neighbours France (14), Belgium (19) or Germany (4), despite a volatile supply chain score from the LPI 2018 <sup>[7]</sup>. ([www.fmglobal.com](http://www.fmglobal.com))

FM Global Resilience Index 2019

### COMPARE

2019 RANKS - TRENDS: 2015-2019

	Ger.	Lux.	Fra.	Bel.
overall	4	7	14	19
economic +	11	2	28	44
risk quality +	3	18	9	8
supply chain +	12	23	17	20

Second Quartile  First Quartile 

Putting Luxembourg on the map is one mission of the Cluster and such benchmarks reflect the efforts to create a positive perception of Luxembourg as a logistics player.

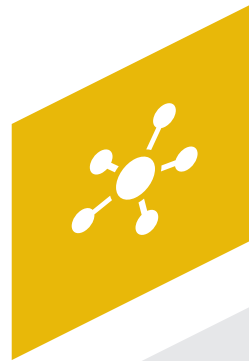
In order to fulfil these missions, the activities of the Cluster focus on 4 pillars of activity:



# Key Pillars

## NETWORKING AND LOBBY

Events  
Lobbying (Sector representative)  
International Associations (ELA, BVL, CSCMP, UECC)  
Institutional Contacts  
Shippers Council  
Position Papers



## INNOVATION

Digitalisation and ICT  
Link to House of Start-ups and LCI  
Link to LIST and University LCL  
Sustainable Logistics (Lean + Green)  
Collaborative Projects

## KNOWLEDGE SHARING

Training with House of Training  
Conferences with Themes  
Support Trade Facilitation - SWL  
Education and Training  
Logistics in Education



## PROMOTION

Trade Fairs  
Economic Missions  
Promote Logistics in Public Opinion  
Annual Supply Chain Day  
Social Media

# 3. Board

The C4L Board of administration has representatives from 7 founding members and key companies from the sector and observers from the supporting government authorities. Different non-institutional members have been nominated to represent the sub-sectors as well as different modes of transport. New board members are approved at the General Assembly typically in April to have a diverse representative board and include major stakeholders.

**Membres effectifs.** The C4L maintains a **premium membership** for voting member companies that obtain influence, higher visibility and preferably have administrators at board level. Effective members are prominently highlighted in the C4L promotional activities and have extended access for their employees to events. Such fees and additional sponsorships cover around 50% of the C4L fixed costs.

**Membres adhérents** gain access for a certain number of employees or company individuals to activities organized by the C4L. There is also an individual and time-limited (2y) start-up membership available.

Find more information about membership access on page 32.

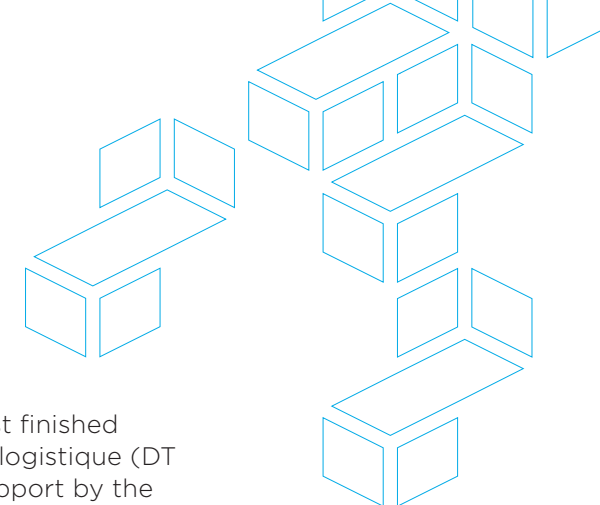
List of Board Members - December 2019

REPRESENTATIVE	FUNCTION	ORGANISATION
Carlo Thelen	President	Chamber of Commerce
Sasha Baillie	Vice-president	Luxinnovation
Viviane Welter	Vice-president	Arthur Welter Transports
Malik Zeniti	Secretary	Cluster for Logistics Luxembourg
Barbara Chevalier	Member	CFL multimodal
René Winkin	Member	Fedil
Francesco Ferrero	Member	LIST
Benny Mantin	Member	University of Luxembourg (LCL)
Fabrice Maire	Member	Cluster maritime Luxembourgeois
Jean-Paul Gigleux	Member	LuxairCARGO
Maxim Strauss	Member	Cargolux
Axel Quadt	Member	DB Schenker
Nicolas Henckes	Member	CLC
Wim McLeanen	Member	Inland Navigation Luxembourg
Charles Gosselin	Treasurer	Independent
Arnaud Lambert	Member	CHAMP Cargosystems

The C4L Board can invite observers and experts to Board meetings.

REPRESENTATIVE	FUNCTION	ORGANISATION
Daniel Liebermann	Director logistics	Ministry of Economy (MINECO)
Max Nilles	Director logistics	Ministry of Mobility and Public Works (MMTP)

# 4. Business Plan



The Cluster for Logistics Luxembourg (C4L) as a logistics network is involved with administrations, logistics operators and shippers to inspire decisions that meet stakeholders needs. The excellent collaboration between authorities and representatives of major stakeholders in the board and during projects, requires to continuously monitor the competitiveness as an international hub.

## TOWARDS INCREASED DIGITAL INTERNATIONAL ACTIVITIES

The logistics markets were exposed to strong headwinds beyond the uncertainty provided by the continuously delayed BREXIT across 2019. First weaknesses appeared in air cargo after the 2018 records and provided a signal for caution. On the other side some companies had strong business and saw continued investments in new logistics warehouses in the freight villages in Contern and Bettembourg/Dudelange that found new international customers with major forwarders (3PL or 4PL) filling most available land with warehouse projects. Through cooperations with stakeholders,

over 30 events were offered across 2019. The monthly **logistics briefing, a common logistics blog supported** by the Single Window for Logistics, allowed to share international, national and regional news and provide management summaries for outlook and information to professionals.

**The number of C4L members was stable around 105 as MSME (Micro Small and Medium Enterprises) like startups matured or some stopped activity. The House of Entrepreneurship (HoE) powered by the Chamber of Commerce answered many requests for information about Luxembourg or potential trade partners. In line with its mission, the Cluster supports the MECO and HoE with relevant information and contacts.**

**In 2019, the Cluster participated in reinforced international promotion by Luxembourg in Asia by joining the economic follow-up missions to Seoul in Korea and to Zhengzhou, Shanghai and Nanjing in China with members, ministries, trade & invest offices and the Chamber of Commerce.**

2019 has seen further development of the LEAN & GREEN program, and

a major step stone, the first finished Diplôme de Technicien en logistique (DT Log) class of 2019 with support by the Ministry of Sustainable Development and Infrastructure, the Ministry of Economy and Trade as well as the Ministry of Education, Children and Youth.

The Master in Logistics and Supply Chain Management (SCM) of the University of Luxembourg and SCALE - MIT celebrated its 2<sup>nd</sup> Research feast in June with international professional candidates and master projects.

Carlo Thelen  
Etienne Schneider  
and Jundong Kim  
promoting start-up  
ecosystem in Seoul (©MECO)



# Objectives 2020

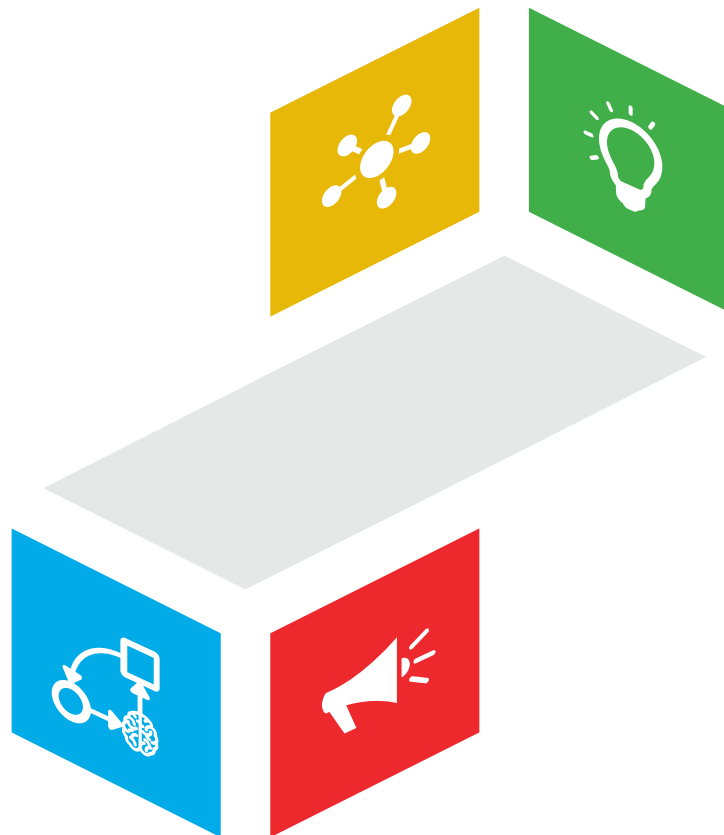
## NETWORKING AND LOBBY

Prepare & attend Networking events  
Coordinate shippers council  
Share information & News briefing  
Roundtable with politics about SCM  
Network visits with BVL Luxbg.  
Represent Luxembourg in Europe (ELA)

## KNOWLEDGE SHARING

Develop quality DT Logistics  
Support bachelor of logistics  
2 conferences

- Fuels & truck technology
- Humanitarian and LPI



## INNOVATION

Support eXplore by UNI LCL  
Logistics Matchathon  
Support SCM Start-up culture  
Lean and Green program  
Establish WG C4L digital

## PROMOTION

Attend Fruit Logistica  
Prepare CC economic missions  
Receive members and prospects  
Tag der Logistik

- Round table Logistics & Policy
- Public opinion & Policy

# 5. Outlook 2021-2022

Entering 2019, the C4L's business plan increased the focus on data driven innovation. Despite powerful headwinds and volatility, addressed in the autumn conference, on resilience the Cluster promoted actions attracting sustainable flows of high value goods and promoted efficient processes in Luxembourg for contract manufacturing and European distribution HQ.

The progress of the extended connections between EUROHUB South and the airport/ Contern platforms, was reflected in Luxembourg's presence as No 7 in the Top 10 according to the **DHL Global connectedness Index 2018** [1].

"The world's level of connectedness declined in 2018, reversing part of the gains that had propelled it to a record high in 2017. The DHL Global Connectedness Index was pulled down by capital flows, even as flows of trade, information, and people intensified."

Till 2014, the Cluster's activities have focused on understanding and improving the competitiveness of the logistics sector for all stakeholders. Since 2015, the Cluster developed an ability and competence for international promotion of the logistics hub Luxembourg to support

high performance logistics services from Luxembourg. The demand for new infrastructure, quality services, warehousing and educated people remains high and since 2018 talent development sees more focus and resources. Be it Pharma, dangerous goods, perishables or last but not least city logistics, Luxembourg needs to further occupy high-value niches for stakeholders and foster collaboration.

**Innovation, Start-ups & Digitization** will take a stronger role in the future activities of the Cluster, while continuing its role to inform public and all stakeholders about the importance of a global supply chain in our economy and industry.

This will require further **talent management & upskilling** through continuous learning offers, keeping new masters of SCM in Luxembourg, adding a logistics bachelor for middle management and reinforcing apprenticeship support and digital skills for the "Diplôme de technicien en logistique" for back-office activities of local and international companies.

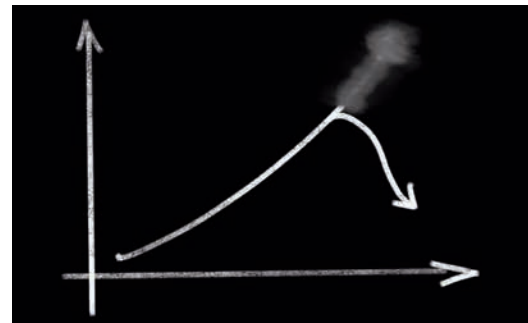
The outbreak of **COVID19** in China at the end of 2019 took the business world off-guard, increased supply chain delays,

workplace absences, lower productivity, as well as travel cutbacks reducing trade and increasing uncertainty and business continuity in 2020 beyond expectations.

Initial thoughts about future activities under consideration are to

- ▶ establish a members driven **C4L Digital workgroup** with the purpose of implementing or testing new digital technology like e-cmr, e-freight, virtual reality, A.I. through hackathons and 5G pilots
- ▶ prepare logistics modules and webinars modules for re- or upskilling with the House of Training
- ▶ obtain guidance about needs from the **Luxembourg shippers round table** for inspirational impulses in Luxembourg to improve competitiveness

The outlook for 2020 is not great!



**DHL Global Trade Barometer Dec19** indicated further contraction in world trade <https://www.dhl.com/global-en/home/insights-and-innovation/insights/global-trade-barometer.html>

# 10 years of the Cluster for Logistics Luxembourg



The Cluster for Logistics (C4L) has been adding value to the Luxembourg economy since 2009. On Friday, 14 June 2019, it celebrated its 10th anniversary at the Chamber of Commerce with over 120 selected guests. In order to revisit the creation of C4L, Deputy Prime Minister and Minister of the Economy Etienne Schneider and Minister of Finance Pierre Gramegna, as well as former Minister of the Economy Jeannot Krecké, shared their views on the C4L creation and the logistics sector.

The **first president of C4L, Pierre Gramegna**, current Minister of Finance saw opportunities in green logistics, looking back with emotion at the creation of the C4L, a process that has not always been easy. He initiated the creation of C4L together with six institutional members and the Ministry of Economy. In his words, 'we are just at the beginning. New technologies like A.I. or drones are changing the way logistics will be working'.

**C4L president Carlo Thelen** noted that *'today, we are in a much better economic situation than 10 years ago when former Minister of Economy Jeannot Krecké and the Chamber of Commerce discussed diversification of the economy. Indeed, those discussions led to the creation of*

*the C4L, an association of stakeholders initiated by 7 institutional partners that represents more than 100 members today. This happened under the leadership of the Chamber of Commerce lead by Minister Pierre Gramegna, who at the time was my predecessor as Director General of the Chamber of Commerce.'*

Before becoming Minister of Economy in 2012, **Etienne Schneider** was already involved in the creation of the C4L in 2008 under Jeannot Krecké's leadership. He highlighted the importance of economic diversification and recalled that the sector plays an important role in Luxembourg. Mr. Schneider claimed that the data driven innovation strategy and process simplification launched in 2019 will further enhance the importance of Luxembourg in the field. He also stated that projects like the Single Window for Logistics should facilitate import, export and transit flows. He further thanked Jeannot Krecké and Daniel Liebermann (director of logistics at MECO) for their support during the creation of the C4L.



The C4L director Malik Zeniti then gave an overview of the sector and major events of the last decade. A promotional

video developed with support from major members, government and logistics managers highlighted the achievements of the sector in the last 10 years.

Link <https://www.c4l.lu/video>



# Our main events in the last 10 years

Year	Month	Theme or key event	Participants/ Partners
2008		Maritime Cluster Luxembourg formed	Pierre Gramegna-Freddy Bracke
2008		Minister Jeannot Krecké pushes project to transform WSA site in Bettembourg/Dudelange for logistics for economic diversification	Minister of Economy Jeannot Krecké
2009	27 <sup>th</sup> March	Official deposit of Statutes of C4L with Institutional members	1st president Pierre Gramegna
2009	April-May	Communication about new Cluster for Logistics	Marie-Hélène Trouiliez
2009	4 <sup>th</sup> of June	Launch event with 4 different Working groups example: Infrastructures	Pierre Gramegna
2010	February	Logistics Management Forum 2010 (Luxemburg ranks 5th in the LPI)	Members, Chamber of Commerce
2010	October	Innovation in logistics through enhanced ICT tools Innovative urban logistics concepts	CRP Henri Tudor
2010	November	Vocational training Finance, customs and tax Operations	LSC
2010	November	Single Window for Logistics (SWL) kick-off	MECO
2011	August	Alain Krecké appointed Cluster manager	Alain Krecké
2011	November	The Marco Polo EU Programme: Funding sustainable freight transport	
2012	April	Logistics Business Forum 2012 at Foire Internationale	
2012		Study: Future for Logistics 222 recommendations	CRP Henri Tudor & Luxinnovation

Year	Month	Theme or key event	Participants/ Partners
2012	March	"Customs authorities and VAT systems in Luxembourg" "Impact on trade and logistics"	
2012	October	Exhibition: BVL Kongress Berlin Luxembourg Embassy	Georges Santer
2013	March	Inauguration Pharma + Healthcenter Findel and GDP of airport	Luxair Cargo
2013	March	UECC meeting in Luxembourg	Pierre Gramegna
2013	May	Logistics Business Forum at Chamber of Commerce	Chamber of Commerce
2013	May	Launch of Luxembourg Chapter of BVL (Bundesvereinigung Logistik)	BVL
2013	June	Exhibition: Transport + Logistics Munich Dinner Bayerischer Hof	Minister Etienne Schneider
2013	June	Revigoration of Single Window for Logistics	Alain Krecké
2013	November	Perishables Opportunities via Luxembourg Hub	Max Nilles
2013	December	New President Carlo Thelen	Carlo Thelen
2014	January	Alain Krecké steps down as Senior Cluster manager	Alain Krecké
2014	February	New Interim Cluster Manager Charles Gosselin appointed	Charles Gosselin
2014	June	Agreement to launch Lean and Green program in Luxembourg	MDDI Max Nilles
2014	October	Logistics Autumn Evening 2014 dinner	Minister Etienne Schneider



Year	Month	Theme or key event	Participants/ Partners
2014	December	Humanitarian Logistics with Kuehne Foundation	Minister Romain Schneider
2015	March	Launch of DT Logistics with MENJE	Minister Claude Meisch
2015	April	Logistics conference 2015 on Airfreight	State secretary Francine Cloesener
2015	May	Exhibition: Transport + Logistics Munich 1st Logistics Night Brewery	Minister Francois Bausch
2015	May	New Cluster manager	Malik Zeniti
2015	October	Security and quality to maintain value (Pharma)	C4L
2016	January	Exhibition IQPC Coolchain Luxembourg Booth Frankfurt	Coolchain association
2016	May	E-commerce	Van Toorn
2016	June	Exhibition: Air cargo China Shanghai	Minister Francois Bausch
2016	September	Exhibition: E-commerce Deliver 1	MECO/Chamber of Commerce
2017	March	One Belt One Road Conference	Chamber of Commerce ChinaLux
2017	May	Robotics & Artificial Intelligence	CSCMP (US)
2017	June	Exhibition: Transport + Logistics Munich Logistics Night Brewery	MECO/Chamber of Commerce
2017	July	Inauguration Multimodal Hub Bettembourg	CFL Multimodal, MMTP
2017	October	Collaboration and Intermodal Transport	

Year	Month	Theme or key event	Participants/ Partners
2018	January	Melanie Laidié named deputy manager	Mélanie Laidié
2018	February	New webpage www.swl.lu	MECO Gilles Schlesser
2018	February	Exhibition: 1 <sup>st</sup> Fruit Logistica Berlin	Grosbusch
2018	February	Benelux Lean + Green awards	State secretary Camille Gira
2018	November	Moving Barriers in supply chain & Brexit	Deloitte / UK Embassy
2019	March	UECC congress in Luxembourg on mobility	UECC
2019	June	Exhibition: Transport + Logistics Munich	MECO/Chamber of Commerce
2019	June	Celebrate 10 <sup>th</sup> year of C4L	Chamber of Commerce
2019	September	Digital Workgroup Launch Digital C4L	C4L Members
2019	September	Logistics Conference "Change Management & Resilience"	EY

# Facts & Figures 2019

**7**  
**INSTITUTIONAL**  
**MEMBERS**

**90**

**COMPANIES**



Industry



Logistics  
Services



ICT &  
Consulting



Retail

**9**

**START-UPS**

**12**

**PERSONAL**

# 50

Over **50 meetings**  
with Members and  
Logistics companies

 **800**  
Newsletter  
subscribers

 **930**  
Follower  
Linkedin

 **229**  
Follower  
Twitter

# 12

Articles  
and reports

# 11

Newsletters  
in 2019

# 1200

 Over **1200 Participants**  
in **31 Conferences, Events**  
and **Workshops**



# NETWORKING AND LOBBYING

The networking activities of the Cluster regroup specialized events, lobbying actions, position papers, meetings with international organisations (i.e ELA, BVL and UECC) as well as quarterly meetings of working groups like the Shippers Council to listen to industry needs.

**January 11<sup>th</sup>**  
**Visit of Start-up Clear Logistics re-named Shipsta in the port of MERTERT**

**February 14<sup>th</sup>**  
**Brussels visit of SUMY and Bruxelles Mobilité**

The Cluster and LIST visited SUMY in Brussels to get an overview.

Picture visit SUMY Sustainable mobility start-up in Brussels using low CO2 biogas vehicles.

Report of V. Orlandi and C. Olinger for Wort.lu with Videos <https://bit.ly/2WUHQDI>



Visit of Urban Logistics Center of start-up SUMY in Brussels

**February 28<sup>th</sup>**  
**Shippers Council @ Fanuc-Kuehne + Nagel Contern**

The Shippers council met at the new Contern 2 warehouse of Kuehne + Nagel. The meeting was organized by FANUC Europe as a shipper and included a visit of the Fanuc warehouse.



Fanuc also has demo robots on display



Large Fanuc Robot with Sietze Meijer

**March 1<sup>st</sup>**  
**Ishikawa Students Visit**

Cargolux and the Chamber of Commerce have a cultural exchange that includes a student exchange with the Ishikawa province in Japan. The Cluster organized a logistics day with the delegation meeting Ziegler in Bettembourg and visited the University in **Belval**.



Ishikawa delegation in Belval university



Ishikawa visiting Ziegler Dudelange

**March 8<sup>th</sup>**  
**UECC Economic Forum Transport in Luxembourg**

The European Association for Transport of 50 Chambers of Commerce from 5 countries **UECC** held its annual conference in Luxembourg on March 8th. The program was organized by the Cluster for Logistics Luxembourg on behalf of the Chamber of Commerce. Representatives from business and politics presented their vision for a better Europe in the Luxembourg Chamber of Commerce. Over 100 guests got an overview of the need for infrastructure and investment, a key issue in Europe. UECC President Dr Christoph Juen presented the "Transport Policy Positions" for the 2019 European elections. For Juen, the community is facing a multitude of complex challenges.





**May 14<sup>th</sup>**  
**Shippers council at the Intermodal Hub in Bettembourg**

The Cluster for Logistics initiated a Shippers council that met on invitation only at the premises of Intermodal Hub in Bettembourg to talk about their challenges including eco-combis, a weight of 44 tons across all borders with Luxembourg and the need to increase the reputation of logistics. CFL multimodal later offered a tour of the infrastructure.



Shippers council meeting in Bettembourg

**June 14<sup>th</sup>**  
**10 years Cluster for Logistics**

The Cluster for Logistics (C4L) has been adding value to the Luxembourg economy since 2009 and on Friday, 14 June 2019, the C4L celebrated its 10<sup>th</sup> anniversary at the Luxembourg Chamber of Commerce with over 120 guests in attendance.



The special guests of the evening of June 14th representing the government: Pierre Gramegna minister of finance and former president, Deputy VP Etienne Schneider and former Minister of economy Jeannot Krecke with Malik Zeniti and president of C4L Carlo Thelen

**June 28<sup>th</sup>**  
**Hints for career management by BVL Luxembourg with advice from Thomas Mayer “Von Amazon bis Zwiesel”**

The BVL Chapter Luxembourg met on June 28th for a career advice meeting in Grevenmacher in Luxembourg at Simon’s Plaza. Malik Zeniti, BVL Chapter Luxemburg Chairperson launched the event with a review of 2018 and 2019 outlook. The attendees were able to get career advice from Thomas Mayer, former co-speaker. Through a review of his career “From Amazon to Zwiesel”, Thomas highlighted decisions over the past 30 years. Participants could share experiences and give members good insights into an open career in logistics.



Cosy Meeting with BVL Friends

**September 19<sup>th</sup>**  
**7<sup>th</sup> Shippers council hosted by Husky Europe-Dudelange**

The Cluster for Logistics initiated Shippers council was hosted by Husky at the European Headquarters in Dudelange. Michael Queitsch and his colleagues took the opportunity to present the company, gave precious advices on intercompany trade and customs issues before organizing a visit of the site.



Michael Queitsch explains complex industrial import/export procedures for global supply



# INNOVATION

**January 22<sup>th</sup>**  
**Lean and Green Information session**

**April 4<sup>th</sup>**  
**First train Luxembourg-Chengdu arriving after 19 days in Chengdu**



M. Zeniti proud to join the 1<sup>st</sup> train to Sichuan province ceremony. It arrived in 19 days.



Vice Mayor of Chengdu inaugurates 1<sup>st</sup> Train from Lux to China in presence of CFL management and partners.

**April 24<sup>th</sup>**  
**2<sup>nd</sup> International Start-up event in Luxembourg**

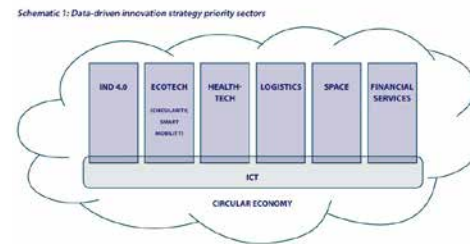
On April 24<sup>th</sup> 2019, logistics startups from Luxembourg, Germany and even the US presented their pitch in front of an audience with industry experts followed by pre-arranged 1:1 matchmaking sessions. The 2<sup>nd</sup> matchmaking event with logistics Startups organised by the C4L and German partner CorpPearls was hosted by the Ministry of Mobility and Public Works. The nine participating companies had only 3 minutes to present their business case to 50 guests that attended the event. For the first time, the matchmaking event offered a prize for the best pitch/project. The 1.000 Euro award for the best startup elected by the audience and sponsored by EY, was won by **Re:Charge** with its mobile battery charging station project.



Cheque for RE:Charge by EY

**May 2019**  
**Data Driven Innovation Strategy May 2019**

The government published a new Data driven innovation strategy in May 2019 for all 6 priority sectors including Logistics. Download the Strategy Paper <https://bit.ly/3bOuE8s>



Luxembourg data-driven strategy by MECO

**August 2019**  
**Technoport visit**

Technoport is the oldest Incubator in Luxembourg. Based in Esch and led by CEO Diego de Biasio they have various roles as Incubator, Co-working space for Start-ups and Fab Lab in partnership with the Ministry of Economy.

The Cluster met also with Luxembourg Tech school founder Sergio Coronado to discuss the organisation of a digital hackathon.



Technoport

**September 20<sup>th</sup>**  
**Workshop Digital C4L in Contern**

The Cluster for Logistics launched a Digital Workshop on September 20<sup>th</sup> to define priorities and sketch an action plan for the future strategy of digital logistics. Over 20 companies and institutions were present for the first edition. The group will continue to meet in 2020.

It is no longer enough to use real-time data obtained through the Internet of Things just to track and trace goods

- it needs to be turned into useful information. "The 'holy grail' of supply chain management today is predictive analysis," says Mr Daniel Liebermann in Luxinnovations Happen Magazine 2019.



1<sup>st</sup> Digital C4L workroup hosted by Champ



Board member Arnaud Lambert introduces the subjects

## 🏠 September 30<sup>th</sup> Sustainable transport: Streetscooter Demo with DHL Express in Contern



Streetscooter Demo with Cube4T8, DHL managing dir. F. Remogna and mayor of Contern Marion Zovillé

## 🏠 September 24<sup>th</sup> 3<sup>rd</sup> German Luxembourg Start-up event @ EY Luxembourg

Startups in mobility and logistics were back in Luxembourg for the 3<sup>rd</sup> time to present their services on 24<sup>th</sup> September. The Matchmaking Conference was organised by Cluster for Logistics, the Ministry of Mobility, CorpPearls and EY. Malik Zeniti (C4L), Max Nilles (MMTP), Tobias Verlende (CorpPearls), Brice

Lecoustey and Kevin d'Antonio (both EY) welcomed the nearly 50 guests at the EY Headquarter on Kirchberg. To encourage competition, the start-up pitchers competed against each other for the Best Pitch. The Winners of the third edition were picked by the participants of the event. The conference guests gave their favours to **Frédéric Stiernon from CarPay-Diem** ([www.carpay-diem.com](http://www.carpay-diem.com)), a provider of digital Fuel card building an extensive network in Europe. Patrick Kersten (Doctena) as a serial entrepreneur gave interesting insights.



Winner Frédéric Stiernon (middle) from CarPay Diem, co-organizers Kevin d'Antonio (EY), Tobias Verlende (CorpPearls), Max Nilles (MMTP), Hélène Delamare (EY)

## 🏠 October 23<sup>rd</sup> Launch Lean and Green Program 2019/2020

The fourth LEAN & GREEN Programme was launched in October. The companies active in retail, express delivery and airport infrastructure work over six months on an action plan to reduce their CO2 emissions by 20% in five years' time. Additionally, energy savings in transport and logistics initiated by an energy supplier within the LAG action plan can qualify for the energy savings scheme, according to the Luxembourg implementation of the European Energy Savings Directive (EED).



Nicolas Rigo DART trains companies to Lean and Green principles



# KNOWLEDGE SHARING

## 🏛️ March 18<sup>th</sup> Speed dating Diplôme de Technicien en Logistique

The 3<sup>rd</sup> annual speed dating between employers and potential apprentices took place before Easter with a strong participation of over 30 candidates. As for many quatrièmes it's the first interview and CV, it was decided that apprentices should get more training for the HR process in 2020 with the help of employers.



34 Speed dating offers a 1<sup>st</sup> opportunity to present themselves to apprentices

## 🏛️ June 14<sup>th</sup> 10 years Cluster for Logistics DT Logistics Awards

The 10 years celebration was a good opportunity to show support to young newcomers and an award ceremony was organised as part of the celebration. The Cluster for Logistics wanted to motivate promising young professionals and the first students finished the Diplôme de technicien en logistique course in 2019. Lucy Kaufmann (left) and Jennifer Klautsch (right) have been designated as the students with the best academic and professional skills and received an award for their efforts. At university level, Jérôme Schank (middle) received



xxx

at the from the Luxembourg Centre for Logistics and Supply Chain Management (LCL). Working.now for Cargolux, he analysed “customer balancing acts in transportation networks”.

## 🏛️ June 27<sup>th</sup> University of Luxembourg LCL Research Fest

The university presents the Master thesis projects of the LCL students and awards the achievement awards to its students. The Cluster attends and supports the university events and invites its members to participate.



The Master students and Professors of LCL



Malik Zeniti and Arnaud Lambert (CHAMP) support the LCL Master Program

## 🏛️ October 10<sup>th</sup> Logistics Conf. “Change management & Resilience”

The resistance to a recession, Brexit or natural events like earthquakes, tsunamis or other shocks and required adaptation of supply chains, was the general theme of the “Change Management and Resilience in Supply Chain conference” on October 10<sup>th</sup> 2019. The conference organized at the Sponsor Deloitte’s new Luxembourg headquarters attracted participants interested in optimising the supply chain during periods of uncertainty. The speakers from DHL Innovation, Deloitte or IAC emphasized the importance of a Plan B and Luxembourg proves to be a



solid place to mitigate logistics risks. In addition, recruiters can find varied and flexible talents to improve their processes in the face of economic crises.

Daniel Küster, Associate Partner at DHL Consulting, presented strategies for risk development and analysis. Depending on the risk assessment

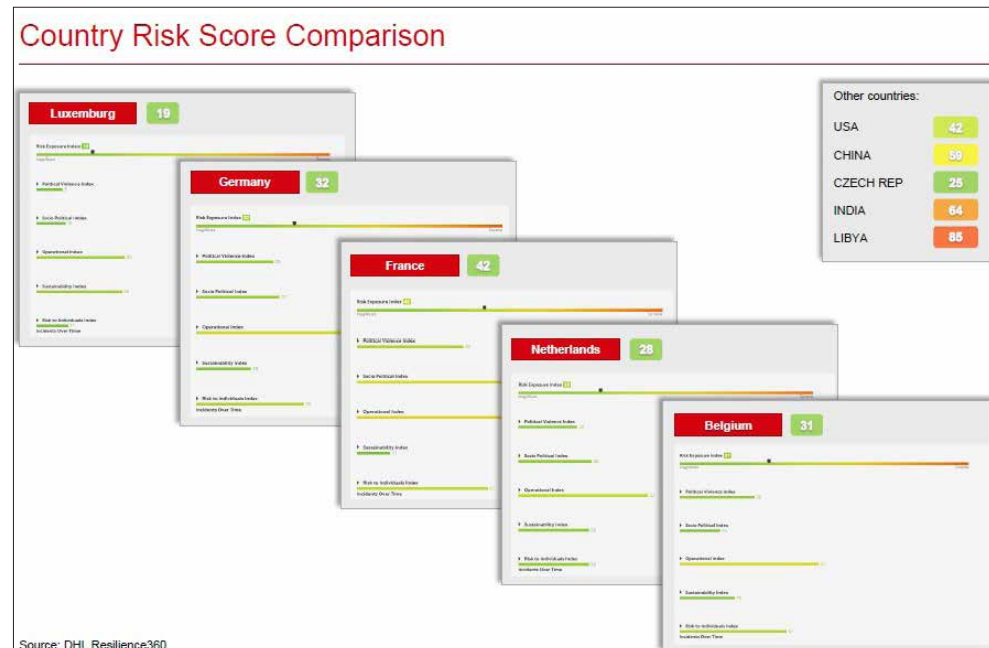


The speakers left to right : Malik Zeniti, Martin Kaltenbach (IAC), Mickael Coq (Deloitte), Carlo Thelen (CC) et Daniel Küster (DHL)

for regions and suppliers, the ideal location for a logistics platform can vary considerably, and Luxembourg can benefit from having excellent scores. The risks to the supply chain are many and varied, from natural disasters to political or social instability, to structural problems affecting flows and production.

giving them the keys to take their supply chain performance to the next level: customer service, lead time, inventor levels, asset productivity... The session featured concrete use cases on performance transformation journeys, an outlook on the Luxembourg High Performance Computer capabilities and the new Operations alliance EY/STREMLER.

Presentations: [www.c4l.lu/resilience](http://www.c4l.lu/resilience)



## October 14<sup>th</sup> Conference on Logistics 4.0 with Stremler and EY



Alphonse Stremler presents his updated offer to clients

Cluster for Logistics, EY and STREMLER AG invited members and partners to an event focused on



# PROMOTION

**February 6<sup>th</sup> - 8<sup>th</sup>**  
**Fruit Logistica Trade Fair in Berlin**

The pavilion showcased Luxembourgish know-how as well as products and services at the specialized Trade Fair FRUIT LOGISTICA in Berlin from February 6<sup>th</sup> to 8<sup>th</sup>, 2019. Arthur Welter, Cargolux, DuPont, LuxairCARGO and Grosbusch Fruits & Vegetables joined the “Fresh Hub Luxembourg” national pavilion organized by the Chamber of Commerce and the Luxembourg Ministry of Economy. It was the second Luxembourgish participation at the specialized fair. The exhibition is the leading industry get-together with a focus on perishables and fresh produce businesses.



The second visit of Fruit Logistica as Luxembourg Fresh hub in Berlin

**April 11<sup>th</sup>**  
**Tag der Logistik/ Supply Chain Day**

On April 11<sup>th</sup> 2019 companies from the industrial, trading and logistics services sectors took visitors behind the scenes of logistics and supply chain management. Institutes open their doors and showcase their logistics and supply chain management projects. Educational and training centres presented their seminars and courses in the field of logistics and supply chain management. Participants gain an insight into the wide variety of logistics and supply chain management activities performed every day. The Open Door Day is organised in cooperation with the German Bundesvereinigung Logistik (BVL) and attracts thousands of visitors in over 20 countries across the world. In 2019, three companies opened their doors for interested guests.

- Le Freeport Luxembourg
- Guided Visit of the Terminal Intermodal Bettembourg-Dudelange
- Panalpina Luxembourg - More than pallet moving

**June 4<sup>th</sup> - 7<sup>th</sup>**  
**Transport Logistic Trade Fair in Munich**

From June 4<sup>th</sup> to 7<sup>th</sup>, Luxembourg companies of the logistics sector took part at the ‘TransportLogistic’ exhibition in Munich, the world’s leading trade fair for logistics, mobility, IT, and supply chain management. Two Luxembourg national booths were jointly organized by the Ministry of the Economy and the Chamber of Commerce. In the Hall B1 reserved for Air Cargo Europe 2019, the companies Arthur Welter, Cargolux, Cluster for Logistics, DuPont, Global Airlift Solutions, LuxairCARGO and lux-Airport represented the Luxembourg air hub. The Hall B6 housed freight transport and logistics services with Cluster members: CFL multimodal, Cluster Maritime, Luxembourg Institute of Science and Technology (LIST), Luxport S.A. / Lorang Gruppe, Société du Port de Mertert S.A. and Transalliance Europe. The Cluster for Logistics organised again the “Luxembourg Logistics Night” in the Augustiner Restaurant on June 5<sup>th</sup> with typical Bavarian music, food and beer. After an intensive

day at the fair, this event offered a relaxing networking opportunity for the delegation.



The common Luxembourg booth at the airfreight Munich was impressive

2019 was the first time that apprentices and teachers were invited with kind sponsorship of Cargolux and Luxair Cargo to a 1 Day visit of Munich.



Modern Eco-combis exposed in Munich during a visit with students

## 🏛️ July 15<sup>th</sup> - 19<sup>th</sup> 2019 Official mission to South Korea and Taiwan

The Chamber of Commerce of the Grand Duchy of Luxembourg organized an official mission led by Deputy Prime Minister and Minister of the Economy, Étienne Schneider, to the Republic of Korea from July 15th to 18th. The mission started in Seoul with a special focus on Artificial Intelligence, Cybersecurity, High Performance Computing and Digital Supply Chain - Space and Logistics sectors and a visit of KISED (Korean Institute of Startup and Entrepreneurship Development) the major incubator of Seoul.

The LTIO in Seoul partnered with local Korean innovation agencies to attract 11 start-ups to ICT Spring in 2019. As a follow-up, during an economic mission to South Korea in May the same year, Luxinnovation and KISED signed an MoU at a startup event attended by Luxembourg's Deputy Prime Minister and Minister of the Economy, Étienne Schneider. The agreement provides for greater

collaboration between the two entities to support the development of the Korean and Luxembourg start-up ecosystems and to assist start-ups wishing to develop in one of the two countries.



Deputy VP and Minister of economy E. Schneider addresses audience in Seoul Korea

## 🏛️ October 23<sup>th</sup> - 25<sup>th</sup> Deutscher Logistik Kongress in Berlin

ELA President Paolo Bisogno manages the international conference about advances in Intermodal split at the annual International Supply Chain Conference organised by BVL in Berlin with over 3'000 attendees.



Sensitivity of rail to natural events near Nîmes by RENAULT



ELA President Paolo Bisogno International Supply chain Conference BVL Berlin

## 🏛️ November 3<sup>rd</sup> - 8<sup>th</sup>, 2019 Trade Mission to China - Zhengzhou - Shanghai - Nanjing

The 2<sup>nd</sup> China International Import Expo (CIIE) of 5-10<sup>th</sup> Nov 2019 in Shanghai was the reason to organize an economic mission to 3 economic hotspots in China in combination with an Economic Mission to China

with the Chamber of Commerce, the C4L and some members. Three cities were part of the program with the economic Center of Shanghai, the capital of Henan province Zhengzhou and Nanjing which is 2h in highspeed train east of Shanghai. The program started with the 3<sup>rd</sup> Henan-Luxembourg Belt and Road Economic forum on Nov. 4<sup>th</sup> in Zhengzhou, that allowed to reinforce relations between the province and Luxembourg.

The mission was organised by the Luxembourg Chamber of Commerce in close collaboration with Luxembourg associations, including the Cluster for Logistics. 34 companies from Luxembourg with 54 business men and women joined the mission, representing the finance, logistics, export, and luxury industry sectors.

# 7. Our projects and workgroups

## LEAN AND GREEN CLIMATE PROTECTION PROGRAM



The Lean and Green (L+G) program started in 2014 with connekt a Dutch non-profit network for sustainable mobility. It saw the first awards in 2015 with Arthur Welter, CFL multimodal, LuxairCARGO and Post. The second lot included Cargolux, GN Transport, Transalliance, while Offergeld, Luxport Group, Kronospan and Webtaxi participated in the third edition in 2017. In 2018 the first achievements lead to a Lean and Green STAR for Arthur Welter, CFL multimodal and LuxairCARGO.

Despite over 600 participants looking for cost and energy savings across Europe, in 2019 the focus was on creating more incentives to encourage participation by addressing energy savings measures according to the European directive for Energy efficiency for obligated parties (EEO).

A fourth edition has been launched November 2019 with 3 companies.

More companies are expected to join the program through the European Green Deal program for climate protection.

The information has been summarized on a special L&G section on the C4L website.



The first three **L+G STAR award winners** were revealed on July 13<sup>th</sup> 2018: **Arthur Welter, CFL multimodal and Luxair Cargo.**

## C4L DIGITAL WORKING GROUP

Supply chain digitalization is growing in importance and will play a key role in the supply chain of tomorrow. It concerns all players whether shippers retailers, e-commerce or 3<sup>rd</sup> party logistics providers at various degrees with various needs and challenges.

The Cluster for Logistics launched a Digital Working Group on September 20<sup>th</sup> to define priorities and sketch an action plan for the future strategy of digital logistics.

**The workgroup will meet several times a year to:**

- Analyse Key trends and learnings on Digital Logistics from the academic and research world
- Exchange best practices regarding the key needs for companies
- Set digital priorities for Luxembourg logistics companies

## MEMBERS VISITS AND MEETINGS

Next to the group visits, highlighted in this activity report, the Cluster met numerous member and non-member companies either at the Chamber of Commerce or at their premises to provide support.

The Cluster met with 50 companies over 2019 in order to get insights about their activities and listen to their requests.

## SINGLE WINDOW FOR LOGISTICS: A DIGITAL TRADE FACILITATION PROGRAM

The Single Window for Logistics (SWL) team worked on the tender to launch a Cargo community system (CCS) that will be linked to the trade facilitation web page ([8] [www.swl.lu](http://www.swl.lu)) in 2020. The Ministry of Economy promotes a repository for paperless information about digital procedures for trade facilitation. It plays a central role to promote knowledge about Luxembourg and its import and export procedures.



Trade facilitation webpage Single Window for logistics

## COMMUNICATION AND MARKETING

### Logistics Briefing

A **monthly logistics news briefing** is compiled on behalf of the C4L and published since 2019 in partnership with the SWL. It shares most relevant national and international information and events in a condensed version for friends and professionals of logistics. On the basis of selected keywords, current news and insights from the field of logistics and supply chain management are sent to experts of the field as well as to interested parties from the general public. This news briefing is sent to subscribers worldwide. Subscribe via our homepage [www.c4l.lu](http://www.c4l.lu)

### Social Media presence with LinkedIn and Twitter

- The C4L also participates in social media communication using the Twitter feed @c4l\_lux which allows to spread news instantly, including interesting video material.
- The [LinkedIn](https://www.linkedin.com/company/clusterforlogistics) page of the C4L <https://www.linkedin.com/company/clusterforlogistics> is an additional link to keep in touch with members and friends of logistics. It gained

500 followers in a year and provides an exciting channel to present events and projects.

- **Job offers** from member companies can be published or profiles shared on request.

### WEBSITE [WWW.C4L.LU](http://WWW.C4L.LU)

The C4L Website serves the community for information about the cluster's activities. It is reinforced by social media for general last-minute information and events.

#### ► News Update

The News Blog and Twitter feed allows to spread relevant news and C4L activities

#### ► More Events

Events relevant to the community including links.

#### ► More visibility for our supporting members (membres effectis)

supporting members are highlighted and their contacts are provided on a special pane.

## LOBBY ACTIVITIES

### Lobbying for Luxembourg – Center Logistics Hub Contern

The C4L lobbying represented the interests of the logistics sector in Contern concerning a higher prioritization of a new connection evaluated by Ponts & Chaussées and the Ministry of mobility and public works to improve the connection with the contournement & highway A1.

### Presence in the media and printed press

The C4L contributed across the year with articles to the written press and social media. The C4L sent out various press releases in 2019 and met journalists for interviews and a yearly round up of the activities in June 2019. Follow Link [www.c4l.lu/press](http://www.c4l.lu/press)



### Workgroup Education

Luxembourg has been able since 2015 to establish logistics in highschool as competent workforce in the new supply chain sector is key. The Logistics technicians DT for administrative desk jobs in planning and executing logistics tasks, covered by a dedicated workgroup "Education" preparing training courses in cooperation with its members and the ministry of education. The first **"logistics technicians"** completed the DT Logistics in June 2019.



Continuous promotion like the Speed-Dating for 1<sup>st</sup> year apprentices with employers will be required.

# 8. Annual Report Summary

---

Ten years after its foundation, the Cluster for Logistics Luxembourg (C4L) has become a mature association, which pursues the core objective of adding value to the Luxembourg logistics sector by pooling and representing the interests of its more than 100 members. Creating synergies between a wide range of logistics players and promoting Luxembourg's core competencies as a central logistics hub abroad are today's crucial missions. To live up to this role, the year 2019 was filled with a variety of exciting activities and events.

In this regard, the Cluster's activities can be divided into four key pillars: Networking, Innovation, Knowledge Sharing and Promotion.

Regarding the **Networking** activities in 2019, the C4L organised several meetings and working groups, which had the ultimate goal to bring logistics members closer together in order to advance synergies and create learning effects. The visit at the Shipsta Headquarter in the Port of Mertert, the yearly Shippers Council organised in partnership with Fanuc and Kuehne + Nagel, as well as the 10-year anniversary celebration within the Luxembourg Chamber of Commerce were only three of a

total of nine events the Cluster for Logistics organised within the framework of its networking activities.

Aiming at driving **Innovation** within the logistics sector, the C4L launched the first edition of its Digital Workshop on the 20th of September. Together with 20 companies and institutions, the working group developed an action plan for a future digital logistics strategy. Regarding the support of young entrepreneurs and start-ups in the domain of logistics, the organisation of two start-up events was a complete success. By fostering competition and innovation among a wide range of participants, the C4L named the start-ups Re:Charge and CarPay-Diem as the best newcomers. Finally, the organisation of the Lean and Green Program 2019/2020 as well as the attendance of the launch of DHL's new StreetScooter in September highlights the great importance the Cluster for Logistics attached to innovative sustainable logistics solutions.

In line with the mission to promote **Knowledge Sharing**, the Cluster for Logistics, has set a high value on passing on knowledge to younger generations. In this quest for excellence, bringing together D.T.

logistics students and companies within the framework of a speed dating event in March as well as awarding the most talented D.T. logistics newcomers in June, were just two of five activities in this domain. In the same context, in October 2019, the C4L invited its members to two logistics conferences to discuss and improve the knowledge about "Change Management & Resilience in Supply Chains" and "Logistics 4.0".

As the Cluster for Logistics further pursues the mission of **Promoting** Luxembourg as a central logistics hub in Europe, activities and events outside of Luxembourg also played an important role in 2019. Against this background, among others, the representation of Luxembourg's logistics sector at the Fruit Logistica in Berlin as well as at the Transport and Logistics Trade Fair in Munich were of particular importance for the C4L. Additionally, the organisation of the annual supply chain day in April, which aims to bring logistics closer to people and companies, was again a great success. Finally, the participation at the official economic mission to South Korea and Taiwan as well as at the Chamber of Commerce's Trade Mission to China were two important highlights in terms of the international engagement.

# 9. Become a member

## Membership of the Cluster:

- Gives input to identify the needs of the Luxembourg logistics sector and their needs.
- Helps you to know the logistics sector to help to make you more competitive and increase visibility.
- Provides information on factors that drive the logistics sectors in Luxembourg.

To apply for the a membership of the Cluster for Logistics, you can fill out the form available on [www.c4l.lu/join-us](http://www.c4l.lu/join-us) or

QR code:



ADVANTAGES	PREMIUM 3.600€	CORPORATE 1.200€	START-UP 380€	PERSONAL 240€
Invitation to all events of the cluster	Yes	Yes	Yes	Yes
Participation free of charge to events of the C4L (unless stated that events include a contribution)	Yes	Yes	Yes	Yes
Reception of news briefing	Yes	Yes	Yes	Yes
Contribution to news briefing	Yes	Yes	Yes	No
Logo on the Web	Highlighted as Premium	Yes	Yes	No
Post News on the Web	Yes	Yes	Yes	No
Employment offers on the Web	Yes	Yes	Yes	No
Sponsoring in the news briefings and events	Yes	Yes	No	No
Eligible as member of workgroups	Yes	Yes	On invitation only	On invitation only
Eligible as Board Member	Yes	No	No	No



# 10. Premium and founding members for 2019

---



# Company and Start-up members

2.0 E-Fulfilment and Cross-Dock Services SA  
Abacus Consulting & Solutions S.A.  
AllPack Services  
ArcelorMittal Commercial Sections SA  
Arendt & Medernach  
Arthur Welter  
AXA Luxembourg  
Banque de Luxembourg  
Banque Raiffeisen  
Bela  
BIL  
Biogros SARL  
BMI Group Operations Sàrl  
BTD SàRL Luxembourg  
Care S.A.  
Cargolux  
CDC Cartel Damage Claims  
CFL multimodal  
CH Robinson  
Chamber of Commerce  
Champ Cargosystems SA  
Cimalux S.A.  
CLC  
CLdN ro-ro SA  
Clear Logistics  
Cluster Maritime  
Cross Borders S.e.c.s.  
CTI Systems  
DB Schenker  
DC Postal  
DEKRA Automobil Gmbh Zweigniederlassung Luxemburg  
Deloitte Tax & Consulting S.à.r.l  
DHL Global Forwarding Luxembourg SA  
DuPont de Nemours (Luxembourg) s.à.r.l.  
elp  
Ernst & Young BAS SARL  
FEDIL  
Fimalux SA  
Froggg's S.A.  
Global Airlift Solutions  
Global Cargo Forum  
GMR Safety  
Goodyear Dunlop Tires Operations S.A.  
Grant Thornton Tax & Accounting  
GROBUSCH S.A.  
Guardian Europe Sarl  
Heintz van Landewyck  
Husky Injection Molding Systems SA  
IAC Partners  
IEE  
In Motion S.A.  
Inco Logistics  
ING  
Inland Navigation Luxembourg  
Jost SA  
Kronospan Luxembourg S.A.  
Kuehne + Nagel  
LCA Luxembourg  
LIST  
Logistics 4 Pharma  
Lorry Rail  
LuxairCARGO  
Luxinnovation  
Luxport S.A.  
Marsh Luxembourg  
Mateco  
NewCo Log  
Offergeld II - GmbH & Co KG  
Panalpina Luxembourg S.A.  
Paul Wuerth  
POST Luxembourg  
PricewaterhouseCoopers  
SAIPEM Maritime Management  
SGI Ingénierie S.A. Luxembourg  
Shell Luxembourgeoise sàrl  
Sobolux  
Société de l'Aéroport de Luxembourg S.A.  
Société du Port de Mertert  
Streff Data Protection Services Sàrl  
Sumy  
The Freeport Luxembourg Holding S.A.  
TNT Express Luxembourg Sarl  
TOTAL Luxembourg S.A.  
Transalliance Europe SA  
Université de Luxembourg  
Vanbreda & Lang  
VTG Finance S.A.  
WDP Luxembourg S.A.  
Wildgen S.A.

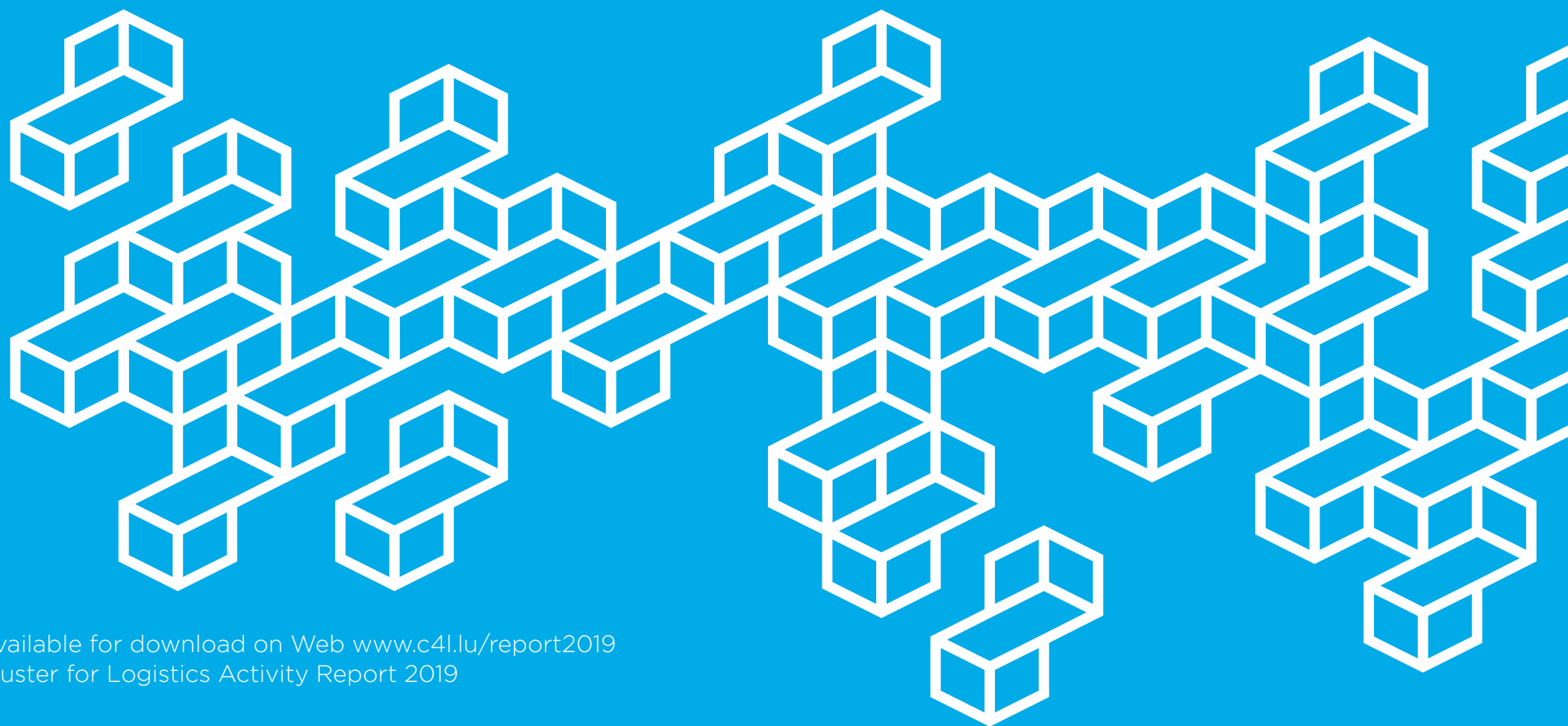
**Links :**

- [1] <http://www.innovation.public.lu/en/index.html>
- [2] <https://www.host.lu/>
- [3] <https://www.cityincubator.lu/>
- [4] <https://www.clc.lu>
- [5] <https://www.tradeandinvest.lu/business-sector/logistic/>  
<https://www.logistics.dhl/global-en/home/insights-and-innovation/thought-leadership/case-studies/global-connectedness-index.html>
- [5] <http://www.elalog.eu/>
- [6] <https://www.luxinnovation.lu/wp-content/uploads/sites/3/2017/11/09258-luxinnovation-broch-logistics-hub-05-2019-web.pdf>
- [7] FMGlobal Resilience Index <https://www.fmglobal.com/research-and-resources/tools-and-resources/resilienceindex>
- [8] [www.swl.lu](http://www.swl.lu)

Contact:

Cluster for Logistics  
7, Rue Alcide de Gasperi  
L-2981 Luxembourg Kirchberg

Tel.: +352 42 39 39 848  
info@c4l.lu  
WWW.C4L.LU



Available for download on Web [www.c4l.lu/report2019](http://www.c4l.lu/report2019)  
Cluster for Logistics Activity Report 2019